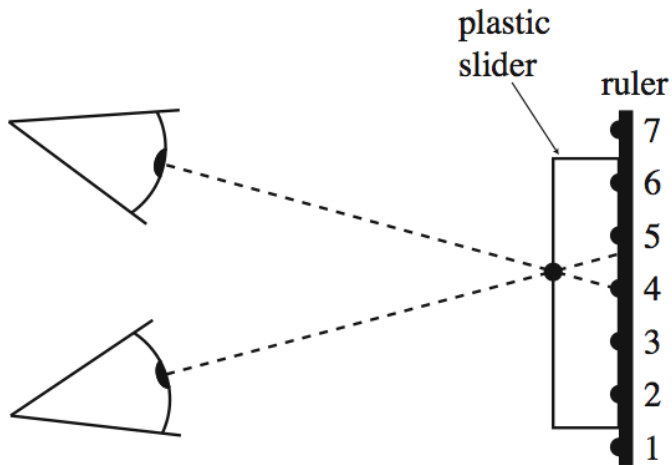
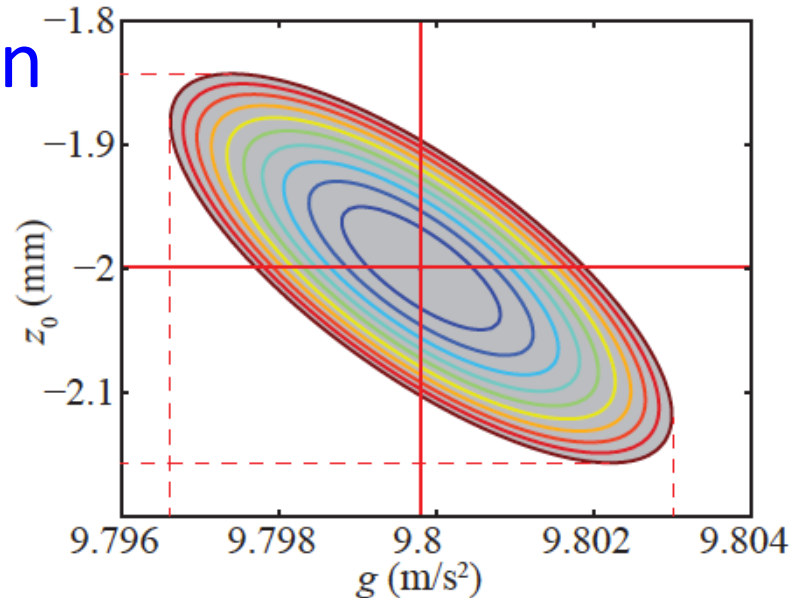


# Einführung in die Datenanalyse



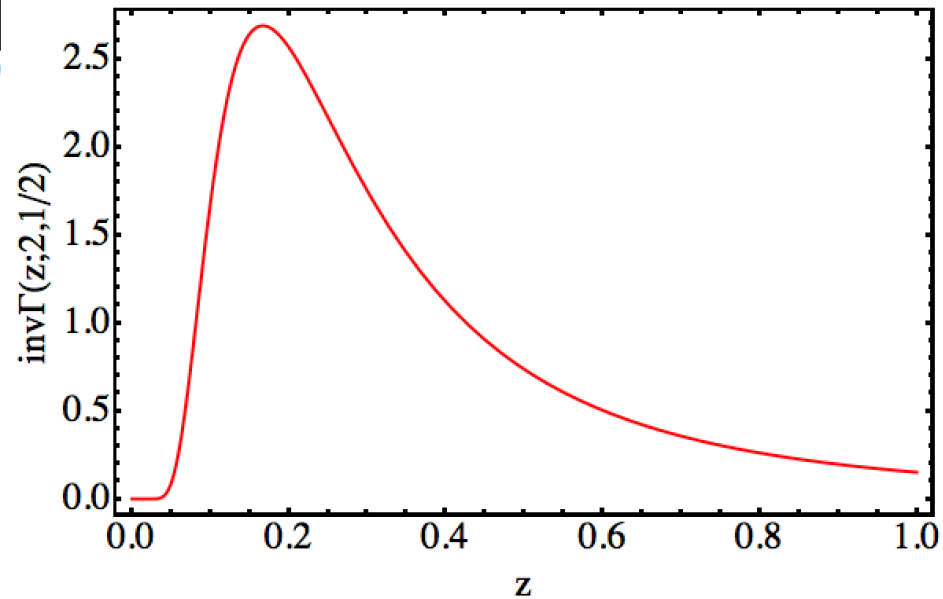
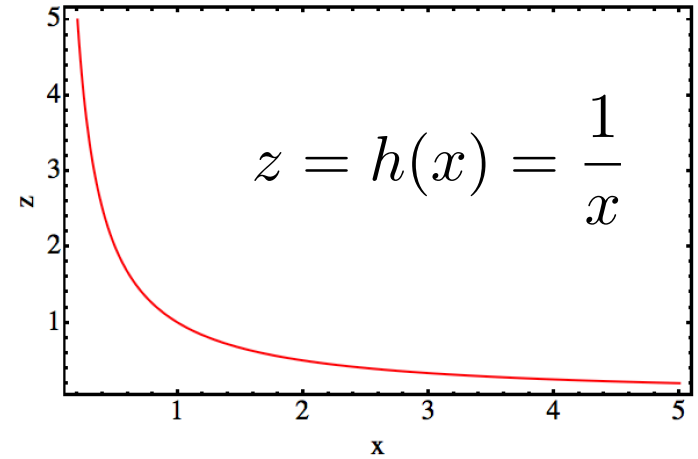
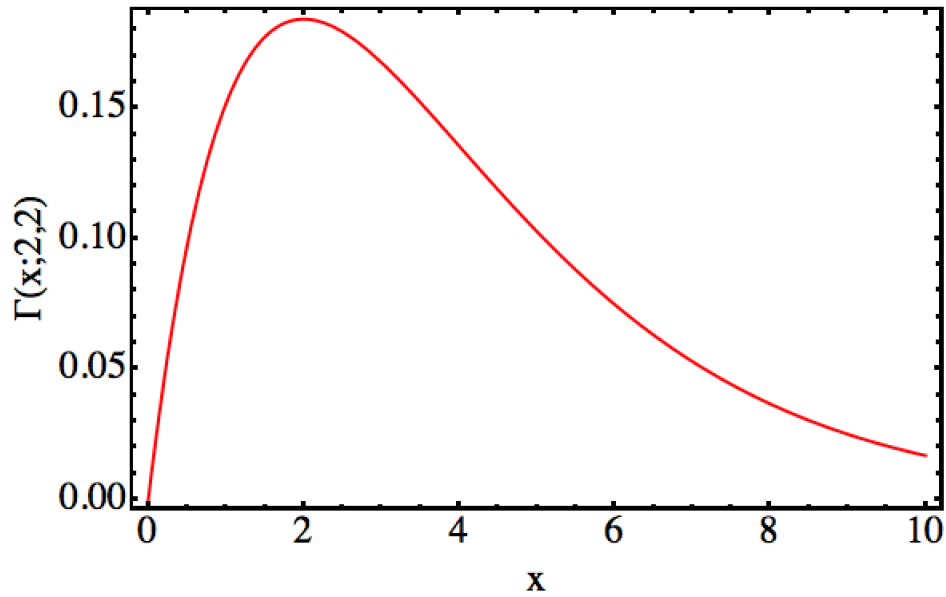
Thomas Ihn  
HS 2014



# Fehlerfortpflanzung

$$\Delta f = \sqrt{\left(\frac{\partial f}{\partial x}\right)^2 \Delta x^2 + \left(\frac{\partial f}{\partial y}\right)^2 \Delta y^2 + \dots}$$

# Transformation der Gammaverteilung



# Radiale Verteilung der isotropen 2D-Normalverteilung

